



THE
ORCHIDS OF THE SIKKIM-HIMALAYA.

By

GEORGE KING, K.C.I.E., M.B., LL.D., F.R.S.,

Superintendent of the Royal Botanic Garden, Calcutta,

and

ROBERT PANTLING,

Deputy Superintendent of the Government Cinchona Plantation, Sikkim.



PART II.

PLATES OF MALAXIDEAE.



CALCUTTA:

Printed at the Bengal Secretariat Press.

LONDON:

Sold by B. Quaritch, 15, Piccadilly; Keegan Paul, Trench, Trübner & Co., Ltd.:
A. Constable & Co., 14, Parliament Street; Luzac & Co., 46, Great Kuseell Street;
E. A. Arnold, 37, Bedford Street, Strand.

1898.

INDEX TO THE PLATES IN PART II.

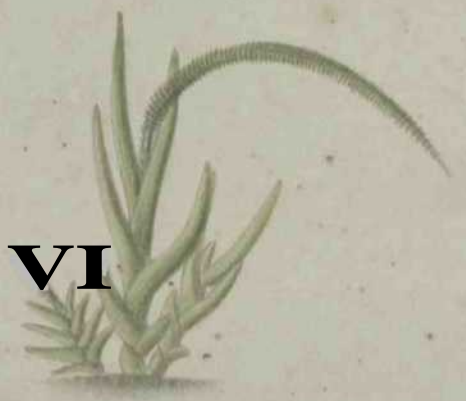
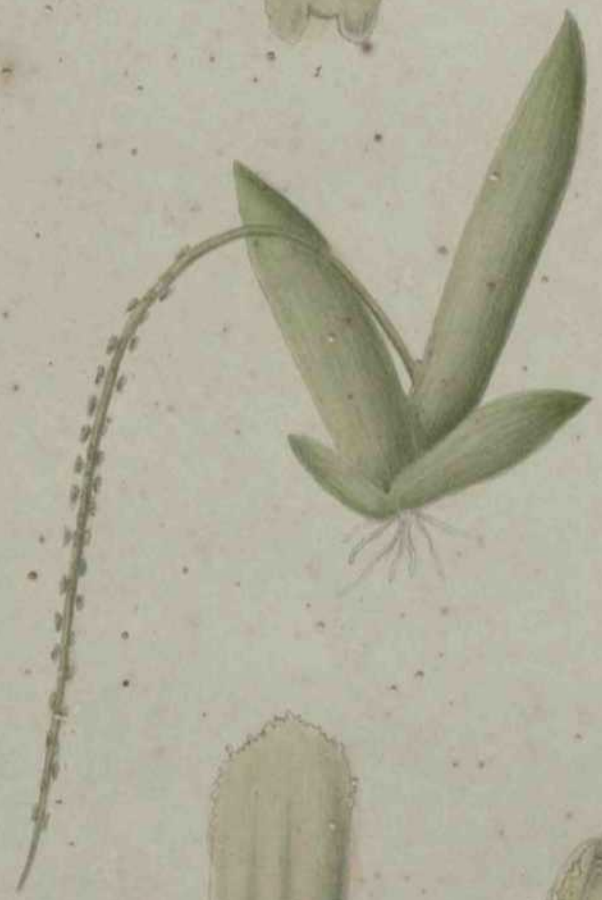
<p>BULBOPHTILLUM affino, <i>Lindl.</i> 91</p> <p> bisetum, <i>Zindl.</i> 99</p> <p> Carcyanuni, <i>Spieng.</i> 97</p> <p> cauliflorum, <i>Jhook.fil.</i> 110</p> <p> Clarkeanum, <i>K. Sf P.</i> 114</p> <p> cornu-cervi, <i>K. Sf P.</i> 100</p> <p> cylindraceum, <i>Lindu.</i> 96</p> <p> ebulbum, <i>R. Sfp.</i> 115</p> <p> eubulpharum, <i>Reichb. fil.</i> 107</p> <p> Gamblei, <i>Hook. fil.</i> 113</p> <p> gracilipes, <i>K. Sf P.</i> 105</p> <p> Griffithii, <i>Beichb. fil.</i> 147</p> <p> gyninopus, <i>Jhook. fil.</i> 93</p> <p> liirtum, <i>Lindl.</i> 117</p> <p> hymenanthum, <i>Hook. fil.</i> 103</p> <p> leopardinum, <i>Lindl.</i> 92</p> <p> leptanthum, <i>Hook. fil.</i> 112</p> <p> Listen, <i>K. Sf P.</i> 90</p> <p> odoratissimum, <i>Lindl.</i> 109</p> <p> piluliferum, <i>E. Sf P.</i> 104</p> <p> Penicillium, <i>Par. Sf Reichb. fil.</i> 108</p> <p> polyrhizum, <i>Lindl.</i> 95</p> <p> protractum, <i>Hook. fil.</i> 111</p> <p> reptans, <i>Lindl.</i> 106</p> <p> rigidum, <i>K. Sfp.</i> 94</p> <p> secundum, <i>Hook. fil.</i> 101</p> <p> stria turn, <i>Reichb. fil.</i> 102</p> <p> Thomsoni, <i>Hook. fil.</i> 116</p> <p> triste, <i>Reichb. fil.</i> 98</p> <p>GIERHCPETAUM Andersoni, <i>Hook. fil.</i> 124</p> <p> bootanense, <i>Hook. fil.</i> 123</p> <p> brevipes, <i>Hook. fil.</i> 122</p> <p> caudatum, <i>Wall.</i> 129</p> <p> coespitosum, <i>Wall.</i> 127</p> <p> cornutum, <i>Lindl.</i> 120</p> <p> elatum, <i>Hook. fil.</i> 130</p> <p> guttulatum, <i>Hook. fil.</i> 131</p> <p> maculosum, <i>Lindl.</i> 132</p> <p> orcacissimum, <i>Reichb. fil.</i> 133</p> <p> parvulum, <i>Hwk. fil.</i> 128</p> <p> refractum, <i>Zoll.</i> 119</p> <p> sarcophyllum, <i>K. S P.</i> 126</p> <p> Sikfrdense, <i>K. Sf P.</i> 125</p> <p> Tiridiflorum, <i>Hook. fil.</i> 118</p> <p> Wallichii, <i>Lindl.</i> 121</p> <p>DBNDBOBIUM aduncum, <i>Wall.</i> 67</p> <p> aggregatum, <i>Roxb. var. Jenkinsii,</i> <i>K. S P.</i> 85</p> <p> ambDum, <i>Wall.</i> 69</p>	<p>DBNDBOBIUM amplum, <i>Lindl.</i> 89</p> <p> — ance^s, <i>Swartz.</i> 64</p> <p> bicameratum, <i>Lindl.</i> 66</p> <p> candidum, <i>Lindl.</i> 63</p> <p> Cathcartii, <i>Hook. fil.</i> 67</p> <p> chrysanthum, <i>Wall.</i> 77</p> <p> clavatum, <i>Wall.</i> 63</p> <p> crepidatum, <i>Lindl.</i> 66</p> <p> cumulatum, <i>Lindl.</i> 63</p> <p> densiflorum, <i>Wall.</i> 79</p> <p> denudans, <i>Don.</i> 62</p> <p> eriaeflorum, <i>Griff.</i> 61</p> <p> Farmeri, <i>Pax.</i> 80</p> <p> fimbriatum, <i>Hook. var. oculata, Hook.</i> 82</p> <p> fonnosum, <i>Roxb.</i> 65</p> <p> fuscescens, <i>Oriff.</i> 88</p> <p> Gibsoni, <i>Lindl.</i> 81</p> <p> heterocarpum, <i>Wall.</i> 74</p> <p> Hookerianum, <i>Lindl.</i> 83</p> <p> longicornu, <i>Lindl.</i> 64</p> <p> — Macrsei, <i>Lindl.</i> 88</p> <p> moschatum, <i>Wall.</i> 84</p> <p> lobile, <i>Lindl.</i> 71</p> <p> pauciflorum, <i>K. Sf P.</i> 76</p> <p> Pierardii, <i>Roxb.</i> 72</p> <p> porphyrochihim, <i>Lindl.</i> 69</p> <p> pygmaeum, <i>Lindl.</i> 58</p> <p> ramosum, <i>Wall.</i> 73</p> <p> rotundatum, <i>Benth.</i> 87</p> <p> stuposum, <i>Lindl.</i> 75</p> <p> sulcatum, <i>Lindl.</i> 78</p> <p> terminate, <i>Par. Reichb. fil.</i> 65</p> <p> transparens, <i>Wall.</i> 70</p> <p>DIDICIEA Cunninghami, <i>King Sf Prain</i> 60</p> <p>JAPANUM Assamica, <i>R. Sf P.</i> 63</p> <p> bituberculata, <i>Lindl.</i> 35</p> <p> bisriata, <i>Par. Sf Reichb. fil.</i> 39</p> <p> Lootanensis, <i>Griff.</i> 40</p> <p> Cathcartii, <i>Hook. fil.</i> 30</p> <p> cordifolia, <i>Hook. fil.</i> 28</p> <p> delicatula, <i>Hook. fil.</i> 46</p> <p> deflexa, <i>Hook. fil.</i> 31</p> <p> Duthiei, <i>Hook. fil.</i> 42</p> <p> Gamblei, <i>Hook. fil.</i> 39</p> <p> Glossula, <i>Reichb. fil.</i> 33</p> <p> Griffithii, <i>Ridley</i> 62</p> <p> longipes, <i>Lindl.</i> 37</p> <p> ,, var. spathulata 38</p> <p> Mannii, <i>Reichb. fil.</i> 61</p> <p> Nepalensis, <i>Lindl.</i> 32</p>
---	--

LEPANS paradoxa, Meichb.fil.	34	OSXHONIA anriculata, Em if P.	16A
perpusilla, Hook. fil.	43	caulescens, LindL	
platyrachis, Hook. fil.	46	Croftiana, K. & P.	6A
plantaginea, LindL.	96	demissa, LindL.	XO
puaila, Eidle.	41	emargiData, Zl & JP:	8 A
wgnu* ₉ EP.	44	ensiformis, LindL.	9
resupinata, Eidle.	48	falcata, K. # P.	14
„ var. Ridleyi, Z. \$ P.	49	iridifolia, Idndl.	8
yiridiflora, LindL.	47	Jenkinsiana, Qriff.	7
		lobulata, R. St -P.	«B
MICBOSTTLIS aphylla, JZ. \$ P.	23	lon^ilabris, K. If P.	13A
congesia, Eichb fil.	23	micrantha X. & P.	5
cylandrostachya, Eichb.fl.	24	inyriantha, LindL.	12
Josepliana, Eichb. fil.	27	obcordat*, Lindl.	11
Khasiana, Hook. fil.	17	pachyphylh, K. & P.	4
Maximowicziana, K. djr JP.	26	pachyrachis, Eichb. / ! /	3
muscifera, Eidl.	25	p^rvula, K. If P..	6B
ramosura, Eichb. fil.	20	Prainiana, K. \$ P.	1
saprophyta, K. 4r P-	21	pyrulifera, LindL.	16B
Scottii, Hook. fil.	10	^nfilabris, LindL.	15
Wallichii, Lindl.	18		
Wallichii, Lindl, Yar. biloba.	19		





VI



Drawn by R. Panting.

QBEROWA LOBULATA, King & Panting.

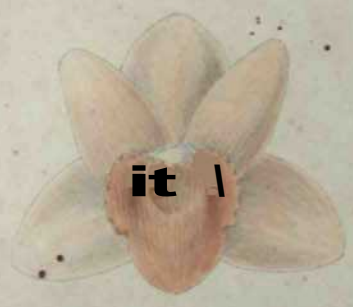
OBERONIA EMARGINATA, King & Panting.

Lith. by K. P. Datta.

A



lf





Lab. by A. L. Singh

ORCHIDIA CRISPICORNIS (Sw.) Lindl.

ORCHIDIA PARVULA, King & Pantling

Drawn by E. Lindl.



A



B







Drawn by R. Pantling.

OBERONIA IRIDIFOLIA, Lindl.

Lith. by B. & Co.



Drawn by R. Panthoff.

OBERONIA ~~ENSIFORMIS~~
ENSIFORMIS. L. n. J.

Lith. by T. N. Saha.





Drawn by R. Fausling.

OBERONIA  CORDATA, Lindl.

Lith. & a. N. Chowdhury.



f



Drawn by B. Parolle.

OPHRYS LONGILABRIS, King & Parolle.

OPHRYS CAULESCENS, Lindl.

Painted by A. D. Mollis.



Drawn by R. Pentling

ORCHONIA FALCATA, King & Pentling

Lab. by Charles Soper, C.S.



3



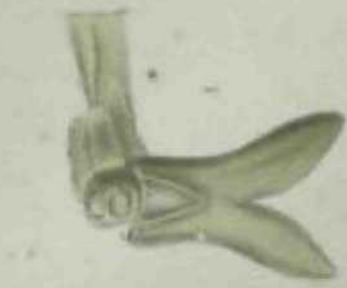
4



5



6



Painted by A. S. Moore 1901

ABRUSUS AUCUPHILUS, King & Prain

Painted by S. Prain



1



2



3



4



5



6



Drawn by R. Paulding.

MICROSTYLIS WALLICHI, Lindl.

Lith. by K. P. Dunn.





Drawn by R. Pantling

MICROSTYLIS SCOTTII, Hook. fil.
= M. CALLOSEM, F. & G. fl.

1844



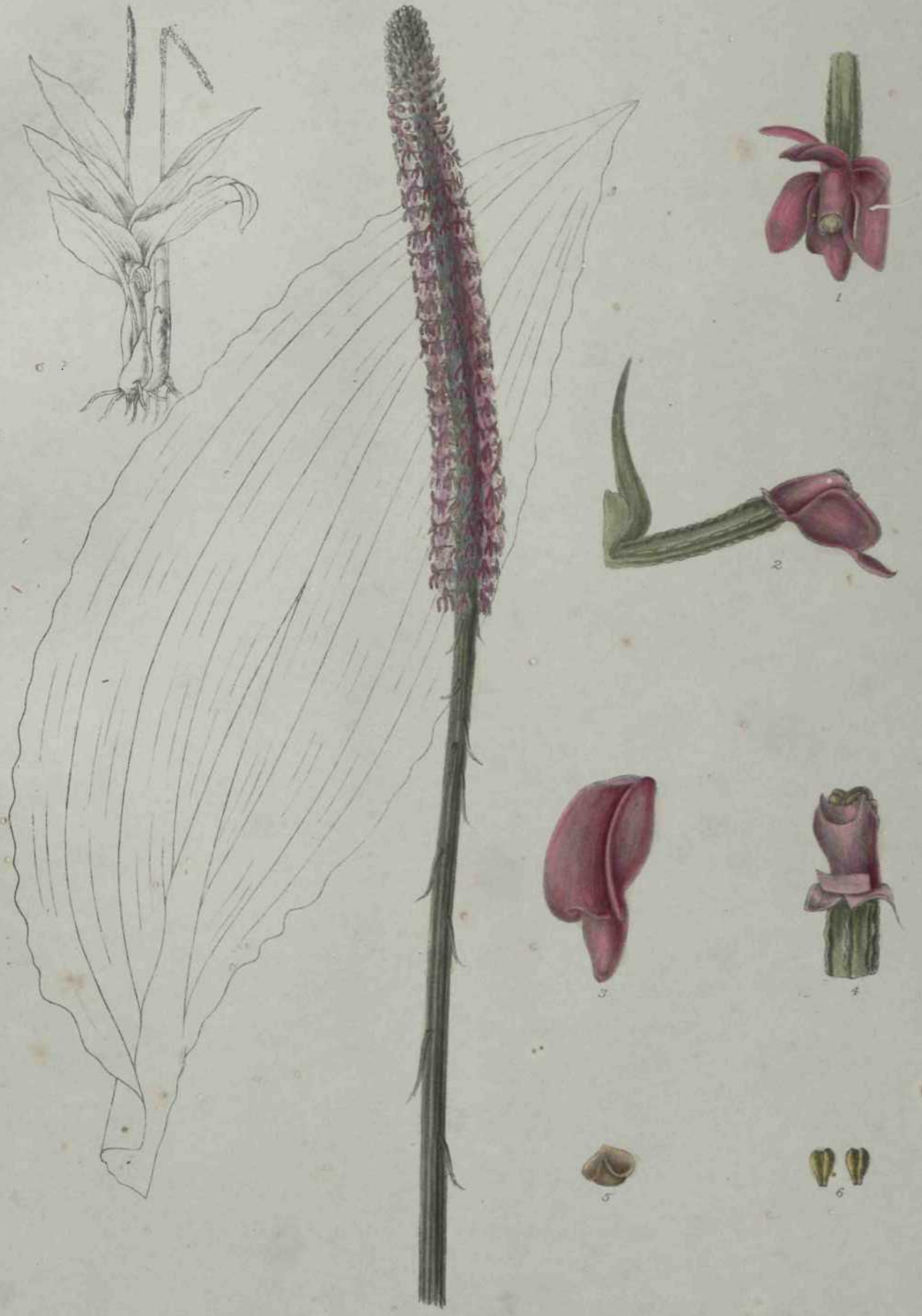
M



Drawn by E. Pantling.

MICROSTYLIS APHYLLA, King & Pantling.

Lab. by E. C. Bass.



Drawn by R Pantling.

MICROSTYLIS GONGESM. Retz. fl.

Lith by A. C. Singha.



Drawn by R. Panting

MICF.OSTYLIS CYLINDROSTACHYA, Reiche, Fl.

Printed by Chitra, Calcutta



Drawn by R. Pantling.

MICROSTYLIS MUSCIFERA, Ridley.

Lith. by H. D. Bose.

f



Drawn by R. Pantling

MICROSTYLIS MAXIMOWICZIANA, King & Pantling

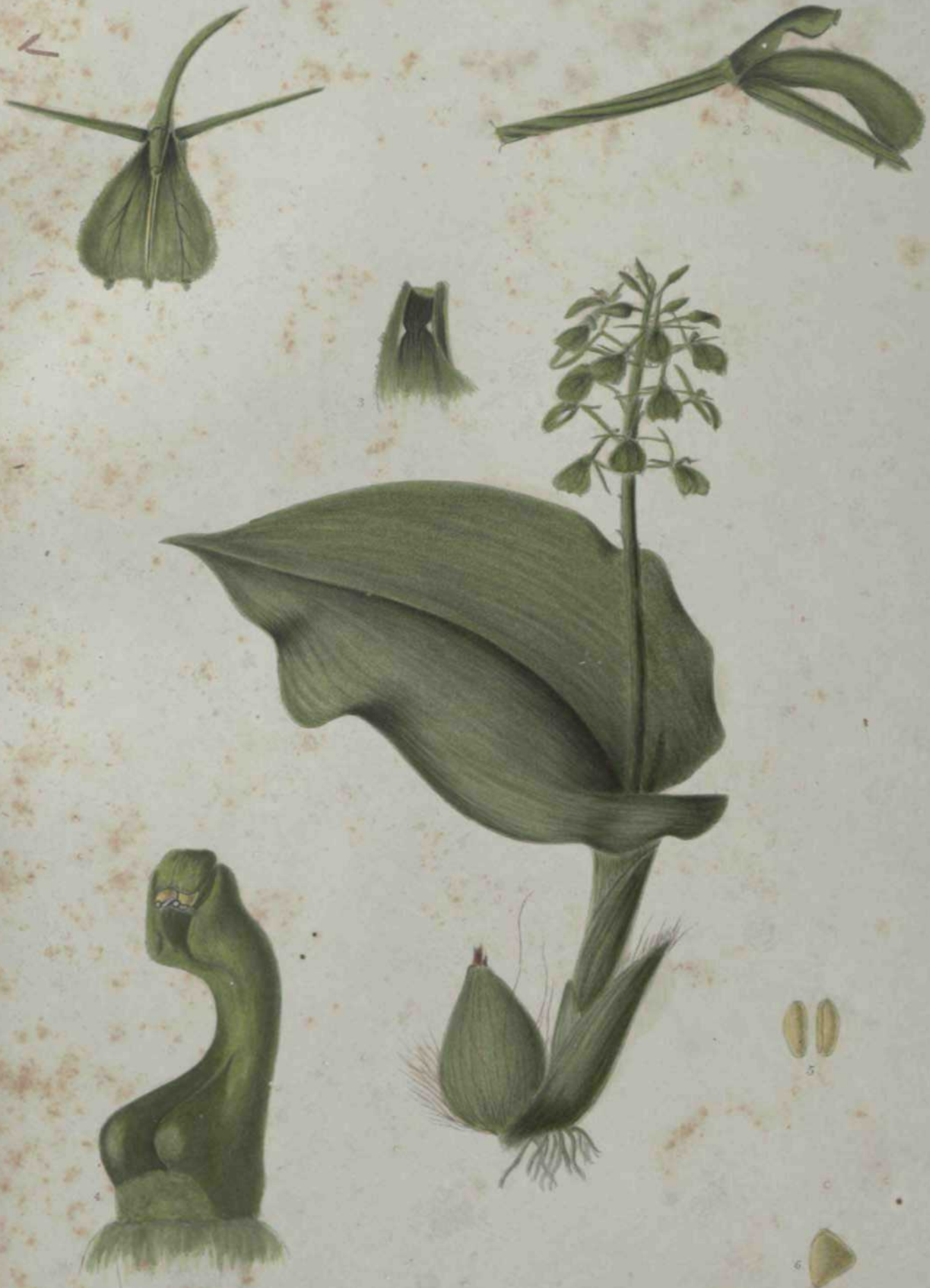
Lith. by Chas. Sill, C^t



Drawn by R. Pantling

MICROSTYLIS JOSEPHIANA, Reichb. fil.

Lab. by A. C. Sengha



Drawn by B. Pantling.

LIPARIS CORDIFOLIA, Hook. fil.

Little by A. C. Sinha



Drawn by R. Pauling.

LIPARIS GAMBLEI, Hook. fil.

Lith. by A. C. Sengha.





Painted by H. Baillif.

LIPARIS DEFLEXA, Hook. & G.

Lith. by A. D. Miller.



H. F. P. 1881

LIPARIS NEPALENSIS, Ledeb.

Painted by A. C. Choudhury



Drawn by E. Pantling.

LIPARIS GLOSSULA, Rehb. fil.

Lith. by A. C. Smith.



Drawn by J. Hooker.

K
LIPARIS PARADOXA, Reichb. fil.

Lab. by Charles S. G. O.

"IB



Drawn by R. Panting.

LIPARIS GIGANTOSTOMA, Reichb. fil.
BITBERCULATA, Lindl.

Lith. by A. C. Singha.



D

DD



Drawn by R. Harting

LIPARIS LONGIPES, Lindl.

Engr. by F. A. Bosc



Drawn by R. Fentling

LIPARIS LONGIPES, Lindl. var. SPATHULATA, Ridl.

Gift by New Guinea Exped. 08



Drawn by R. Panthig

LIPARIS BISTRATA, Par. & Reichb. fl.

Lith by A. C. Singha.



Drawn by E. Pantling

LIPARIS BOOTANENSIS, Griff.

Lith. by Messrs. Chitra Sipi Co.



1



2



3



4



5



6

Drawn by R. Pantling

LIPARIS FUSILLA, Ridley

Lith by Chitra Sipi C^o



m





3



4



5



6





m



5





Drawn by E. Pantling.

LIPARIS RESUPINATA, Ridley.

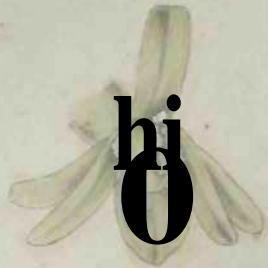
Lith. by A.C. Singha.



Drawn by R. Perring

LIPARIS MESUPINATA, Ridley, var. SIDLEYI, King & Perring.

Lith by A. L. Singh.



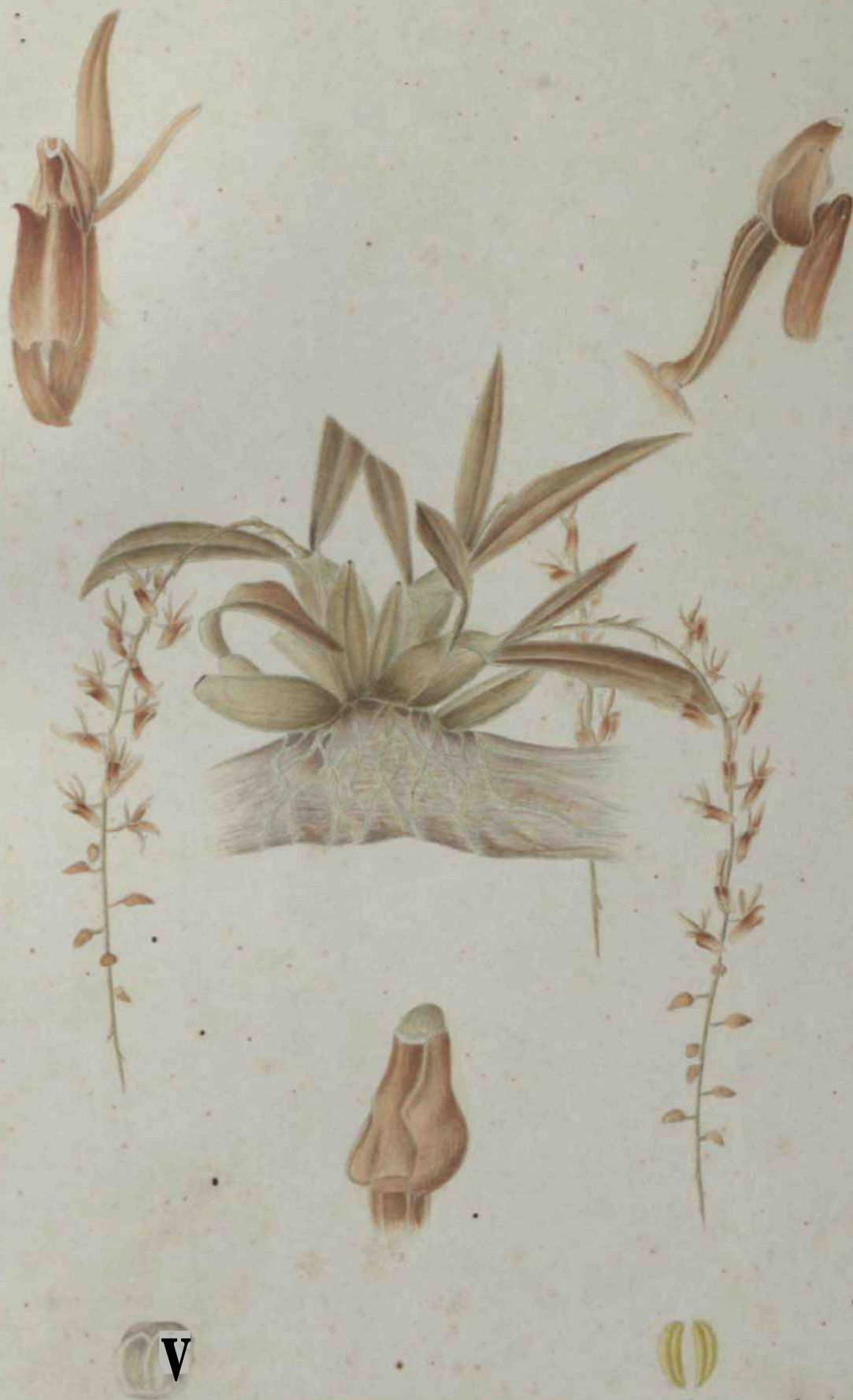




Drawn by R. Chatterjee

LEPISYCHIS GARDNERI, Ridley

Col. by H. Gardner





Drawn by H. Pursh

SPERMATOPHYTES

Engraved by A. C. Smith



'91

Drawn by R. Pantling.

DENDROBIUM TERMINALE, Parish & Reichb. f.

Lith by Chitra Silpi Co.



Drawn by R. Panting.

DENDROBIUM BICAMERATUM, Lindl.

Lith. by A. D. Mordaunt.









"N?"







Drawn by R. Panting

DENDROBIUM CUMULATUM, Lindl

Lith. by Chitra Saha, C.S.



W's

3



Drawn by B. Peck

LEUCOLICHIA FORMICULARIS

Ed. by A. C. Silliman



Drawn by R. Pearce

UTRICULARIA CILIOLATA, Ledeb.

Leaf by Rev. George Don, Esq.



Drawn by R. Panting

DEWDROEVUM ADUNCUM, Wall.

Lith. by Chitra Saha C^o



Drawn by R. Fanning

DENDROBIUM SPATHACEUM, Lindl
= D. CANDIDUM, W. J. L.

Lith. by Chitra Saha Co.



ZINGIBER ARABICUM, L.

Painted by A. T. ...



Drawn by R. Panthong

DENDROBILUM TRANSPARENS. Wall.

Lab. by Choro Silpi CV

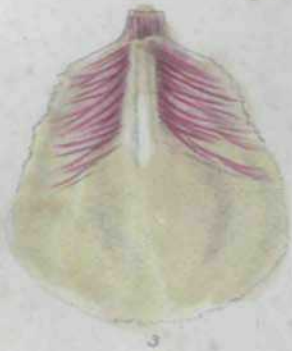
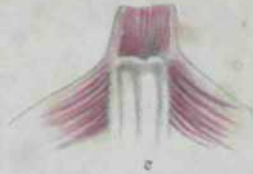


n

Drawn by R. Bunting.

DENDROBIUM NOBILE, Lindl.

Lith. by A. C. Mookerjee.



Drawn by R. Pantling.

DENDROBIUM PIERARDI, Reeb.

Enl. by New Ultra Slip Co.



f

it:

1



DENDROBIUM RUCKERI, Lendl.
= D. RAMOSUM, Wall.

Lab. by P. N. Sinha





Drawn by R. Pantling

DENDROBIUM STUPOSUM, Lindl.

Lith. by Claret & Sons, Calcutta



Drawn by E. Pantling.

DENDROBIUM PAUCIFLORUM, King & Pantling.

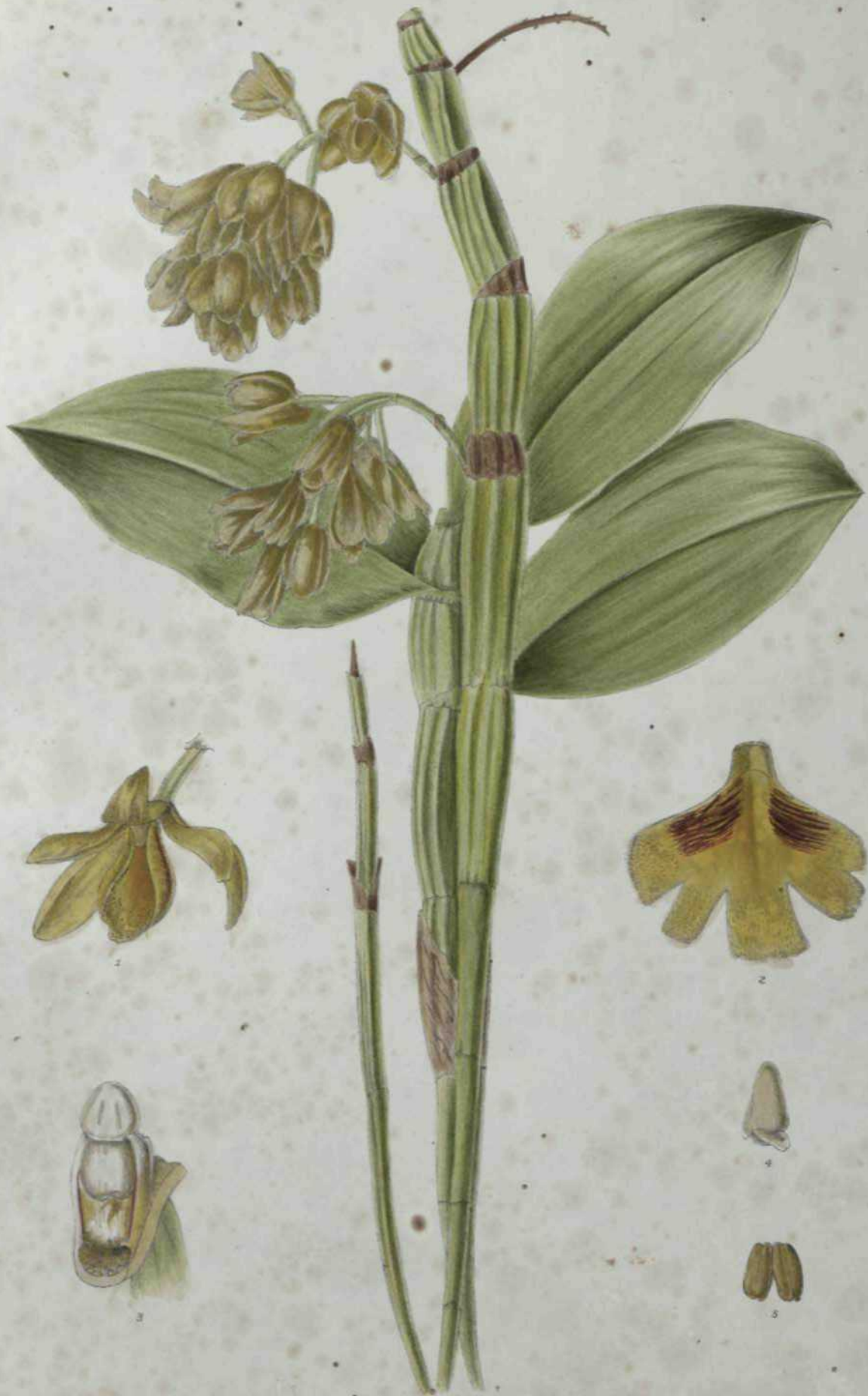
Lith. by A. C. Sengha.



Drawn by R. Parling.

DENDROBIUM CHRYSANTHUM, Wall.

Lith. by New Chitra Sapt. Co.



Drawn by R. Paulding.

DENDROBIUM SULCATUM, Lindl.

Lith. by New Britain & Co.



Drawn by B. Swingle

SPHODROPSYLLIS TROPICORUM, Walp.

Coll. by J. C. Macgregor



^ jv



Drawn by R. Panting.

DENDROBIUM GIBSONII, Lindl.

Lith. by Chitra Saha G.



Drawn by H. Paulding.

DENDROBIUM PUMILIATUM, var. OCULATUM, Hook.

Col. by E. R. Chandra





Drawn by E. Pichler.

DENDROBIUM CALCEOLARE, Carley.
= D. MOSCHATUM, Wall.

Lith. by R. K. Roy.



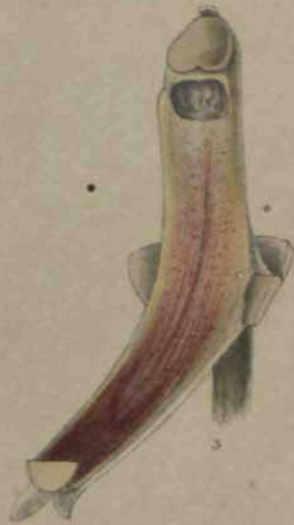
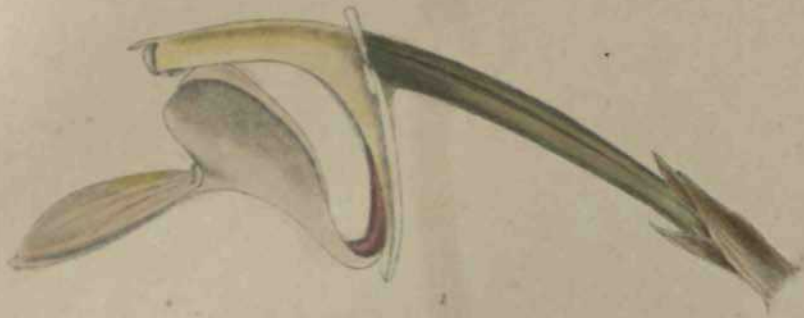


R. Pantling del.

DENDROBIUM MACRAEI, Lindl.

Utkby SQ-mondul





Drawn by R. Pankaj

Letit by Chitra Saha C9

DENDROBIUM FUSCESCENS. Griff.







fft



Drawn by R. Pentling.

BULBOPHYLLUM LEOPARDINUM, Lindl.

Lith. By A. C. Mukerjee.

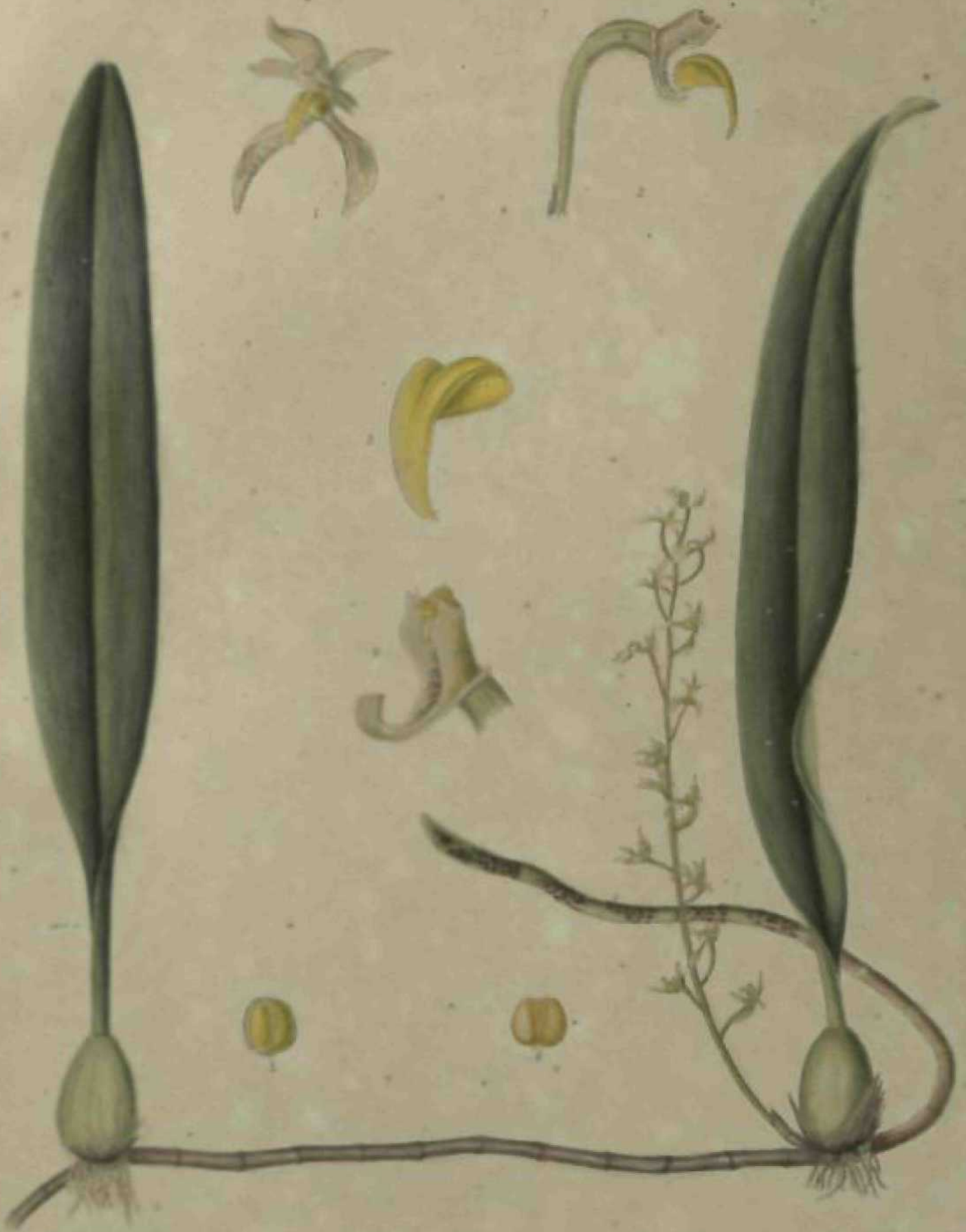


Fig. 1. by R. Pearce

EULOPHYLLUM GYMNOPIA, Hook. & G.

Labell. by A. C. Milne-Edwards



Drawn by R. Pantling

Lab. by Chitra Sipt. C.

~~BULBOPHYLLUM CONCHIFERUM, Rehb. f. III.~~

BULBOPHYLLUM RIGIDUM, King & Pantling.





Drawn by R. Fothergill

Painted by A. C. Sinha

BULBOPHYLLUM CYLINDRACEUM, Lindl.



Drawn by R. P. F. (ing)

BOLBOPHYLLUM CAREYANUM, Spreng.

Painted by G. S. S. (ing)



Drawn by R. Pavani

BULBOPHYLLUM TRISTE, Reichb. fil.

Printed by Chas. Seligman & Co.



Drawn by R. Pantling.

BULBOPHYLLUM BISETUM, Lindl.

Lith: by B. K. Roy.







L41-❁--4.







Drawn by E. Pantling.

BULBOPHYLLUM PILULIFERUM, K. j. W. J.

Lith. by V. D. Chandra.



li

m





Drawn by R. Panching

BULBOPHYLLUM HEPTANS, Lindl.

Lab. by A. C. Mukerjee



Drawn by R. Pantling

BULBOPHYLLUM EUBLEPHARUM, Reichb. fl.

Emb. by E. D. Chandra.



Drawn by R. Pasting.

V

BULBOPHYLLUM PENICILLATUM, PEARCE & BENTLEY

Lab. by New China Silpa Co.



Drawn by R. Fausling

Lith. by J. D. Chandra

v•

BULBOPHYLLUM GRATISSIMUM, Lindl.

i J

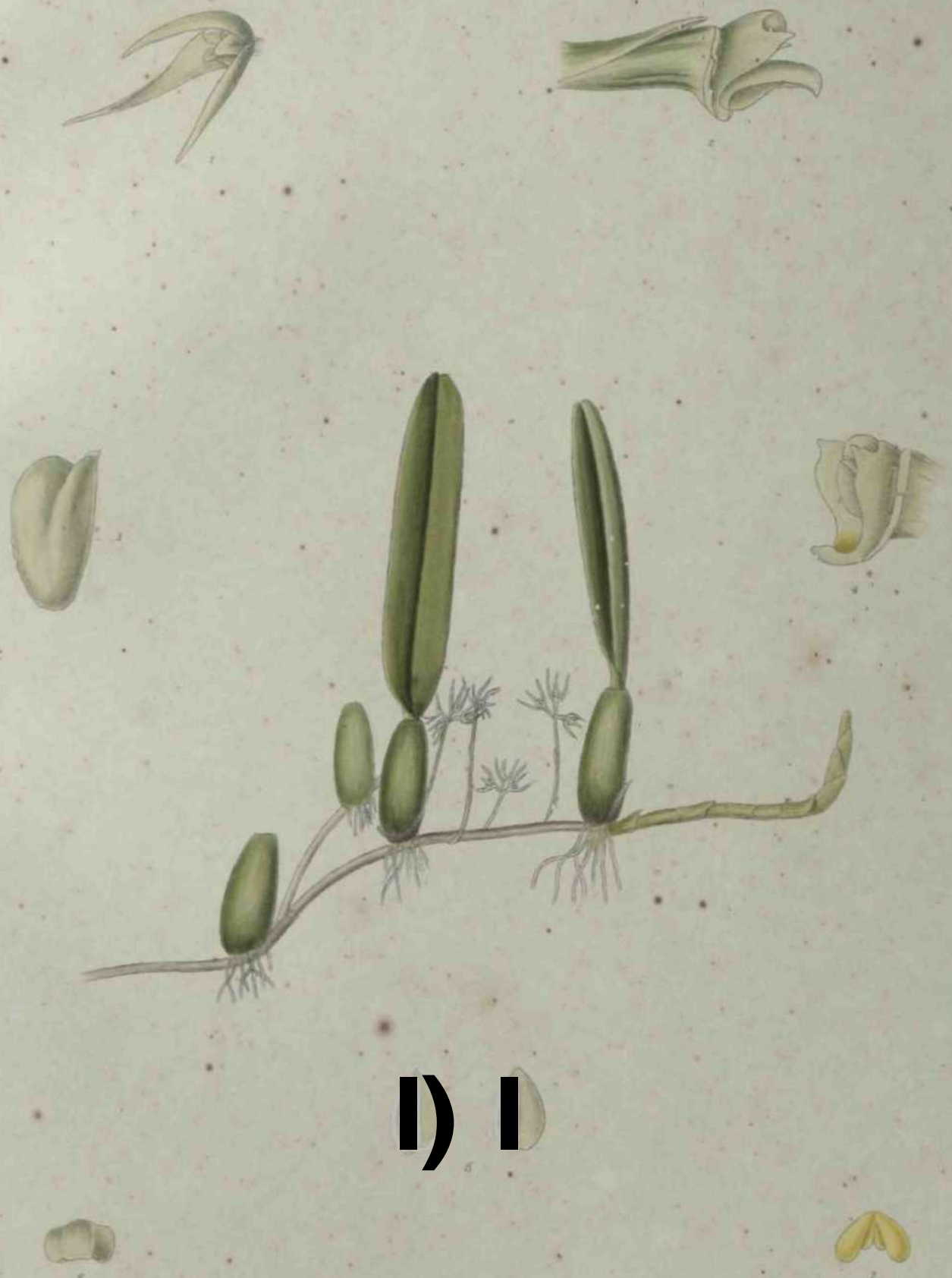


Drawn by R. Parry

Ed. by G. S. Gardner

BULBOPHYLLUM CAULIFLORUM Heck. et.





1 2

v y li

1



Drawn by E. Lindley

BULBOPHYLLUM GAMBLEI, Hook. & G.

Lab. by A. D. Sargent



Drawn by R. Pantling

Lith. by Chitro Supt. Co.

BULBOPHYLLUM CLARKEANUM, King & Pantling



Drawn by R. Parling

Lith. by G. S. Saha C.S.

BULBOPHYLLUM EBULLUM, King & Parling



Drawn by R. Pantling.

Lith. by B. K. Roy

BULBOPHYLLUM THOMSONI, Hook. & G.

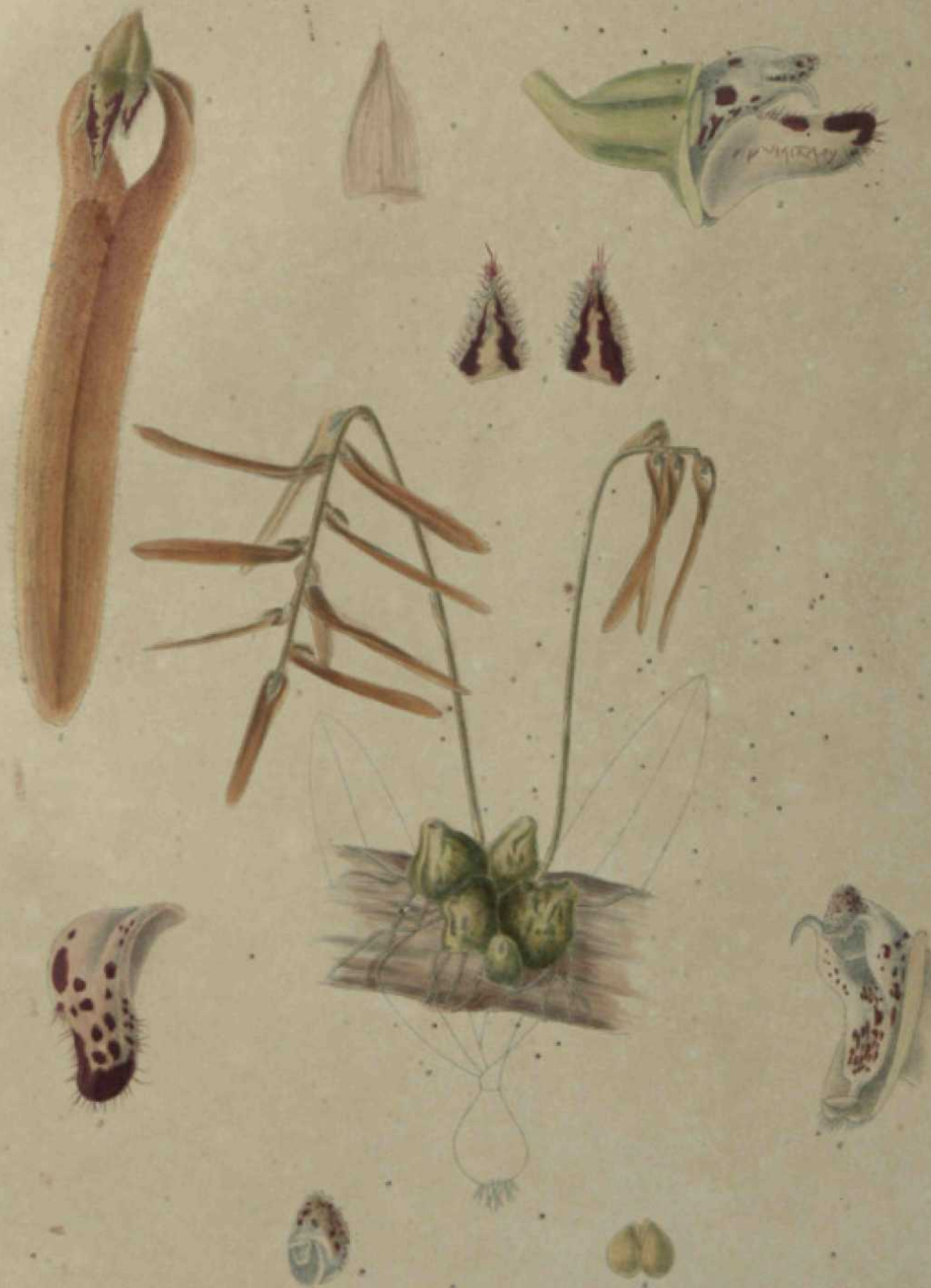


Drawn by R. Swartz

BULBOPHYLLUM HIRTUM, Lindl.

Engr. by R. & G. Heath





Drawn by B. Purshing

CIRRHOPETALUM REPRACTUM, Zollinger

Col. by A. C. Soper



Drawn by R. Paxton

Lith by Chas. Sclay

CIRRHOPETALUM CORNUTUM, Lindl



Drawn by R. Pantling.

CIRRHOPETALUM WALLICHII, Lindl.

Lith by New Chitra Sapt Co.

Crebille of the Sukim-Himalaya.



Drawn by K. Pauling

CIRROMOPETALUM BREVIPES, Hook. fil.

Lith. by A. C. Sledge



Drawn by R. Pantling

Lab. by Chav. Sipi C4

CIRRHOPE TALUM BOTANENSE, Hook. & G.

Orchids of the Himalayas



Drawn by N. Pongting

CIRRHOPETALUM ANDERSONII, Hook. f.

Printed by P. N. Saha

Orchids of the Sikkim-Himalaya

53.



Lab. by B. K. Roy.

Drawn by E. Cuming

CORHYPOTA LUN. BAMBUCIENSIS
C. SIKKIMENSE K & P.



Drawn by R. Handberg

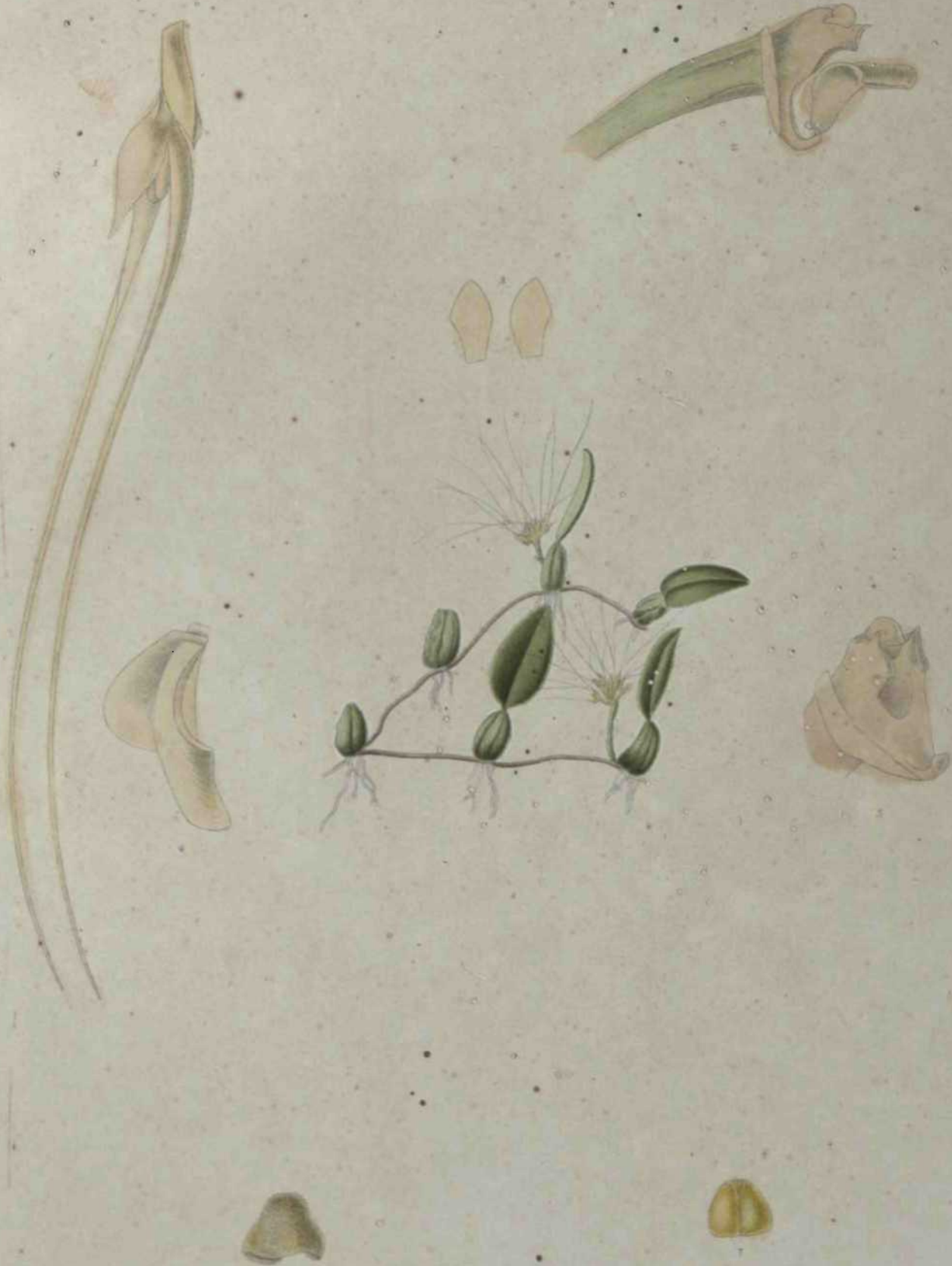
CIRRHOPETALUM SARCOPHYLLUM, King & Prater

Lith. by P. H. Rayer





i)



Drawn by E. Purdy.

CIRRHOPETALUM CAUDATUM, King & Pantling.

Lith. by Messrs. G. & C. S. Co.



Drawn by R. Paulding.

ERRHOPE TALUM ELATUM, Hook. fl.

Lith. by P. N. Sinha.



Drawn by R. Paerling.

HOPITALUM GUTTULATUM, Hook. fil.

Lith. by A. C. Sinha.



Drawn by R. Focking.

CIRRHOPETALUM MACULOSUM, Lindl.

Lith. by New Culture, Singapore.

